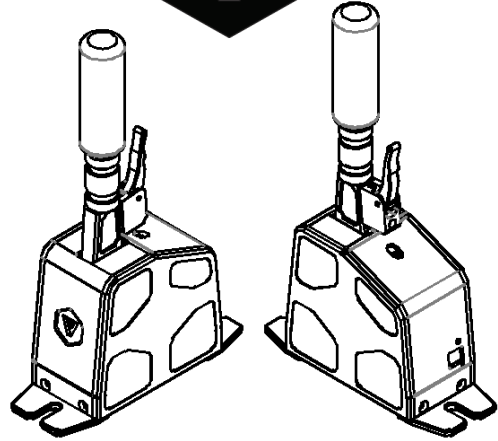
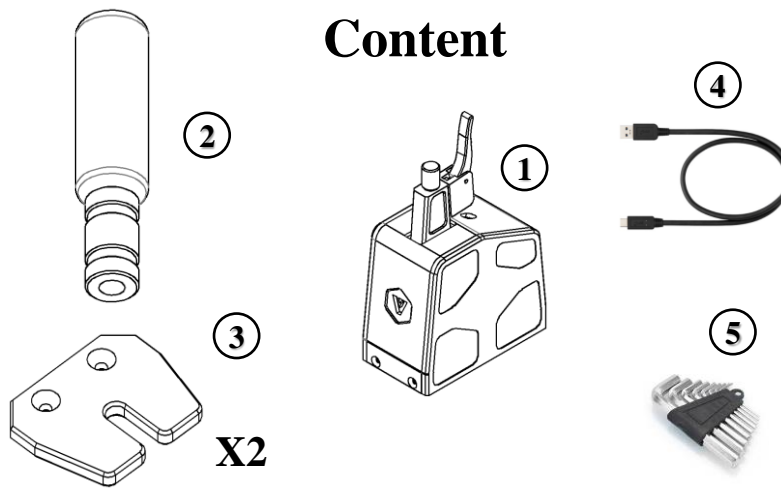


VNM SEQ SHIFTER

Quick Guide



Content

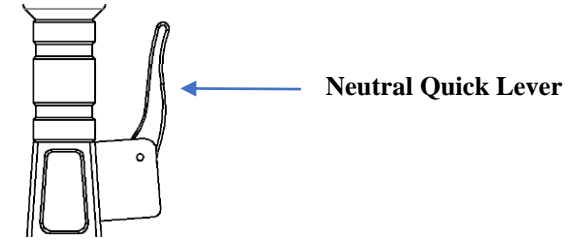
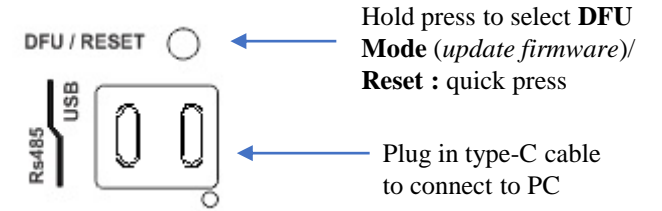


- 1. VNM Seq Shifter
- 2. Handle Extension
- 3. Shifter bracket & Mounting screws

- 4. USB type-C cable
- 5. Hexagon alley key

Connection

The connection is located on the shifter back.

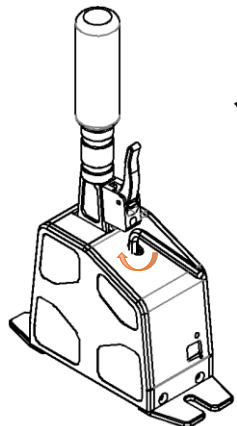


Adjust Seq Shifter

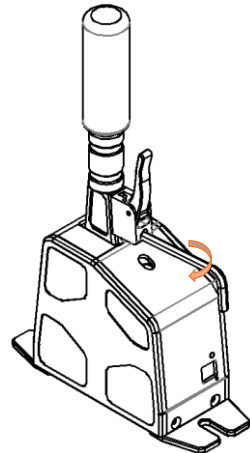
1. Adjust Spring

Adjust Shifting Force

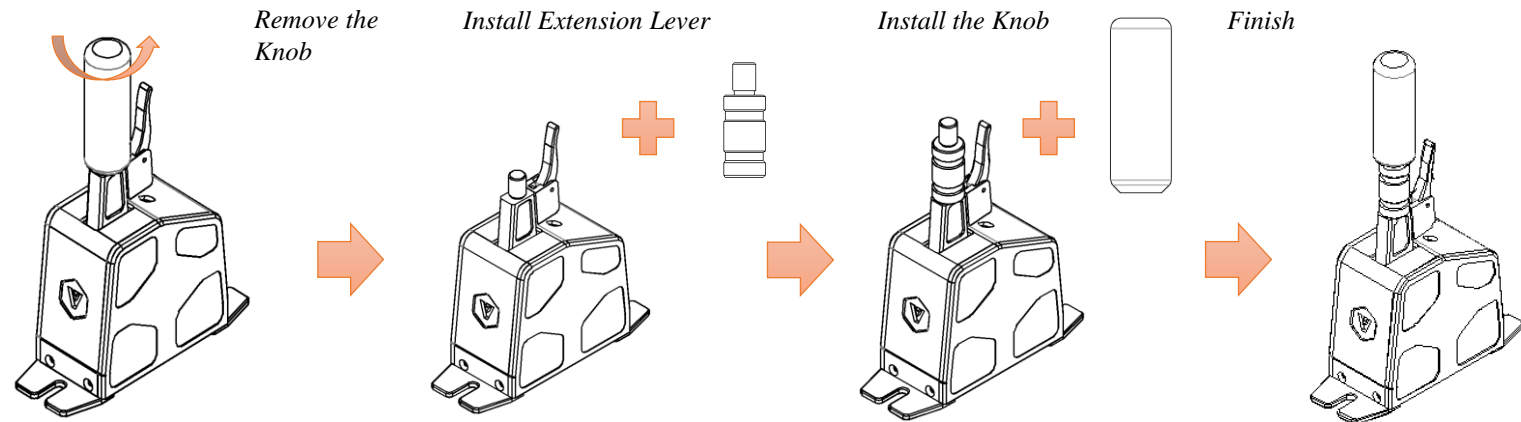
Adjust Neutral Quick Lever Force



- ✓ Turn clockwise/counter-clockwise to increase/decrease the force

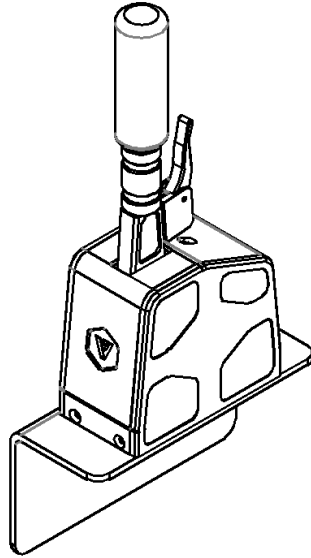
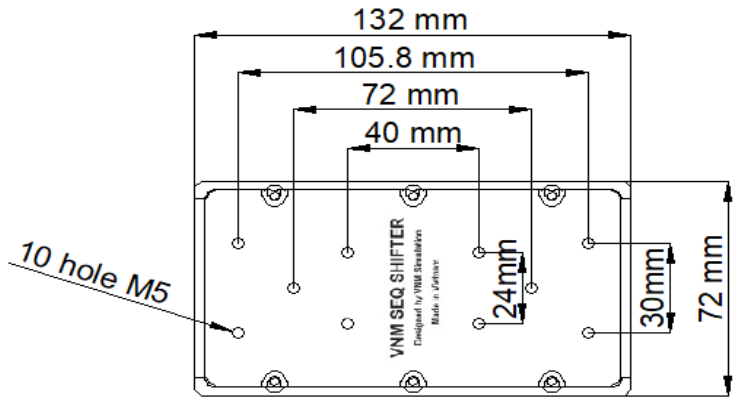


2. Change Shifter Lever Length

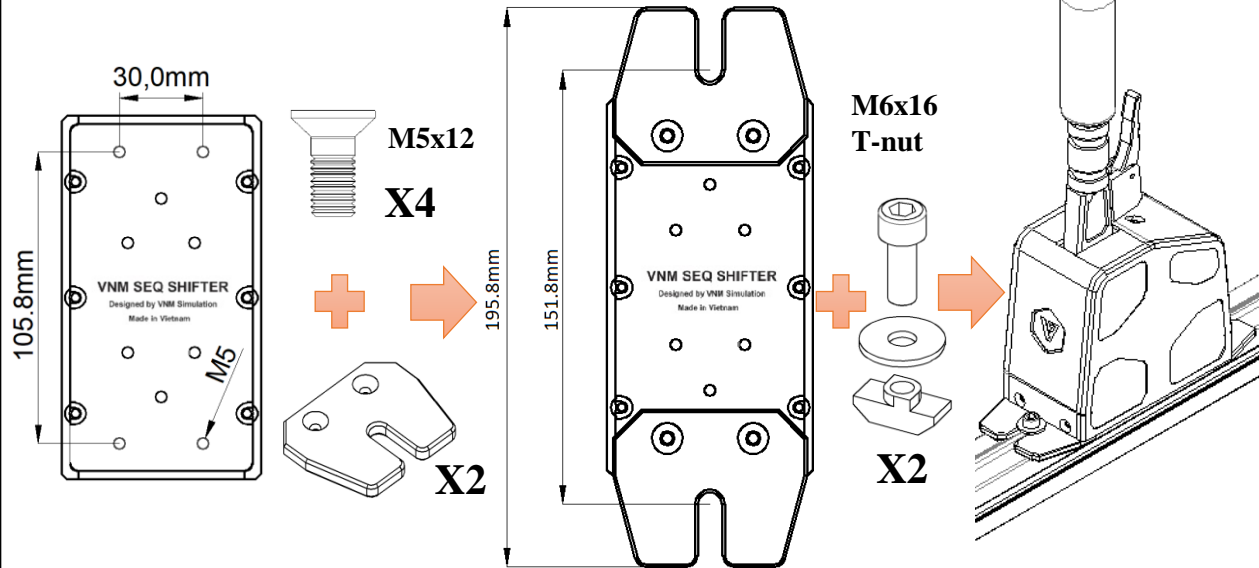


Mounting Solution

1. Mount without bracket



2. Mount with brackets



Shifter Dimension

