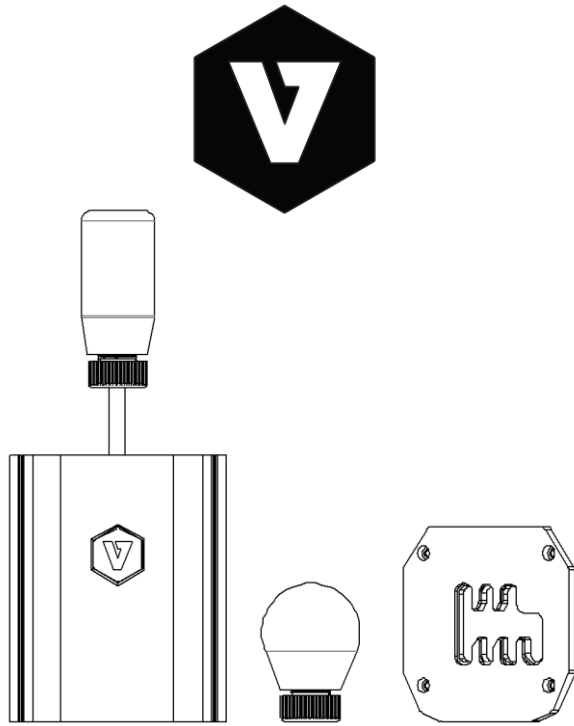
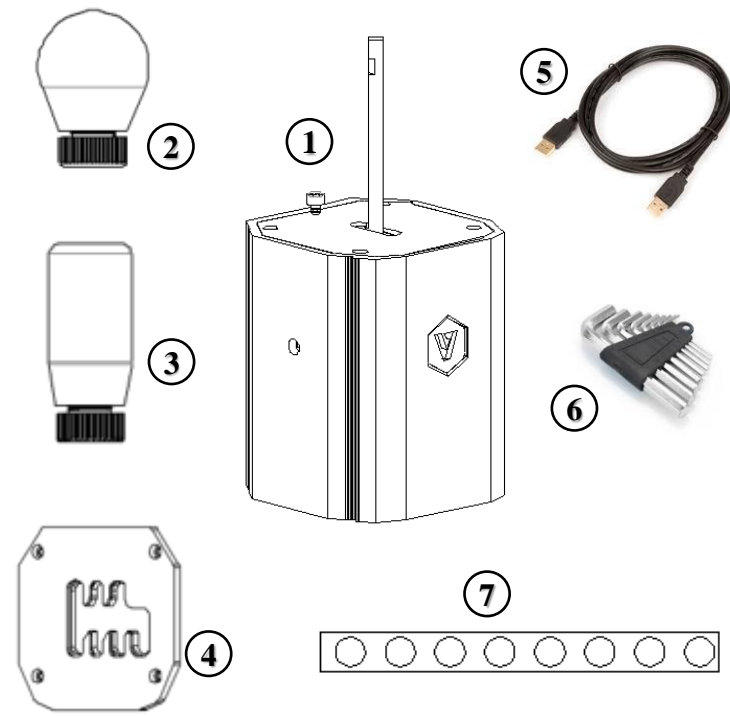


VNM SHIFTER

Quick Guide

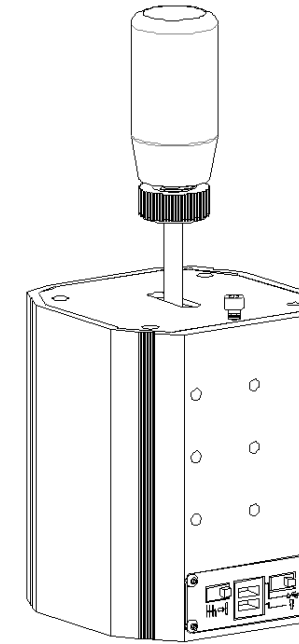


Content



1. Shifter with grid SEQ
2. Grid H
3. Knob SEQ
4. Knob H
5. USB cable
6. Hexagon alloy key & Mounting screws
7. The number stickers for H plates

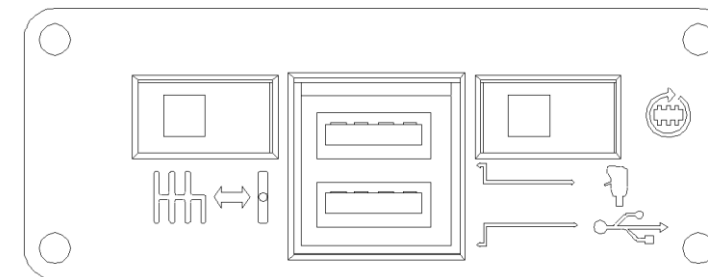
Connection



The connection is placed on the low-behind of shifter.

The icon is:

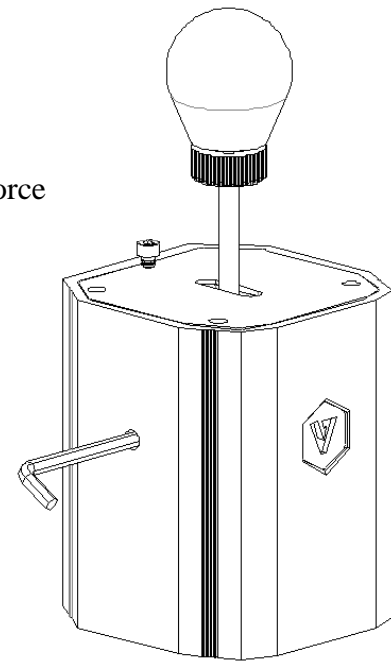
- Plug in USB cable to connect to PC
- H** shifter mode (select by switch to)
- Sequence mode
- Plug in truck knob
- Switch to select **DFU Mode** (update firmware)/ **RUN Mode** (play in game)



Adjust Spring

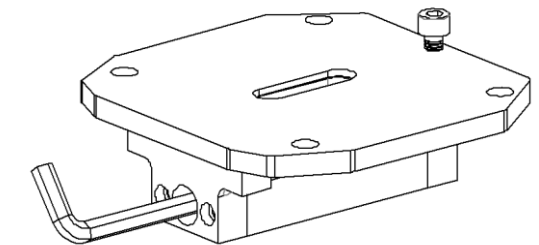
Adjust Y axis:

Clockwise to increase force

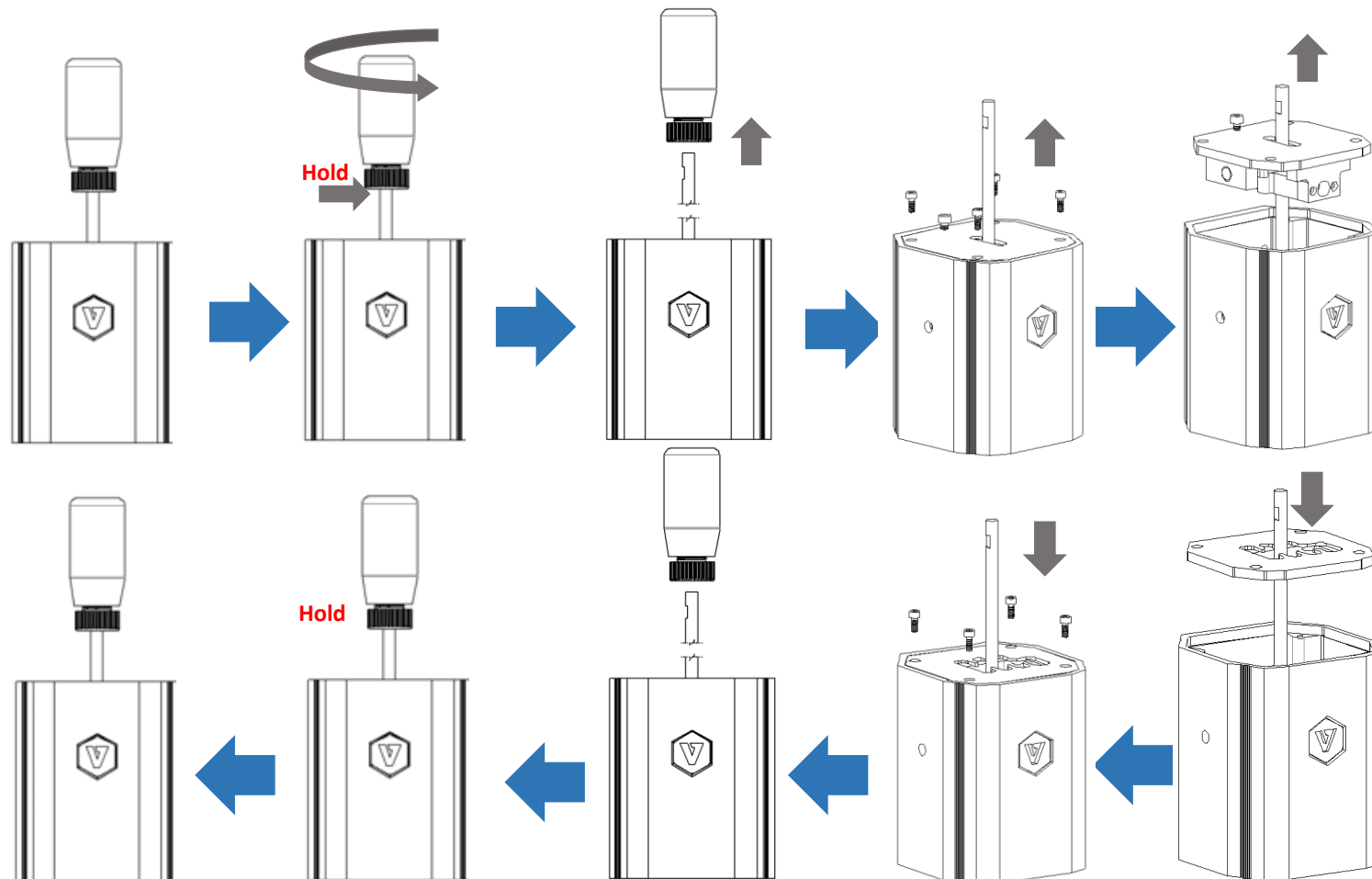


Adjust SEQUENCE grid:

✓ Clockwise to increase force

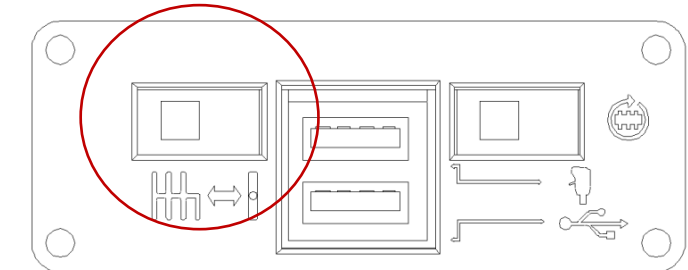


Exchange face & Knob H

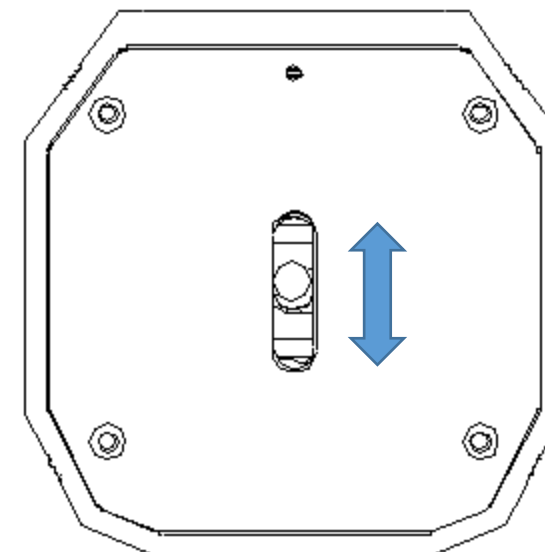


Mode Change

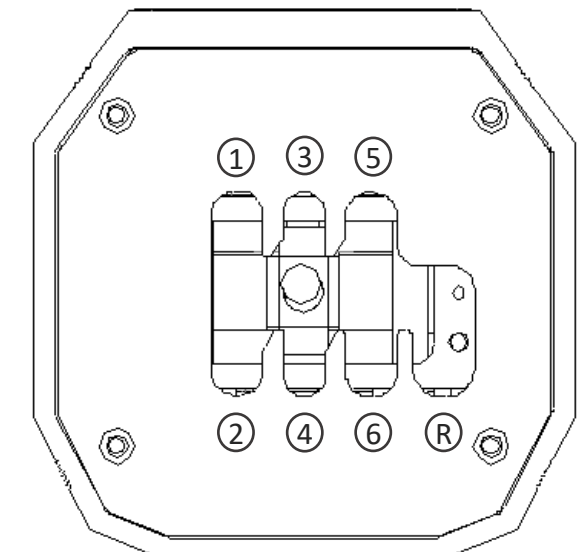
Switch to select H mode and Sequence mode



Sequential gearbox



Manual gearbox



Mounting Drawing

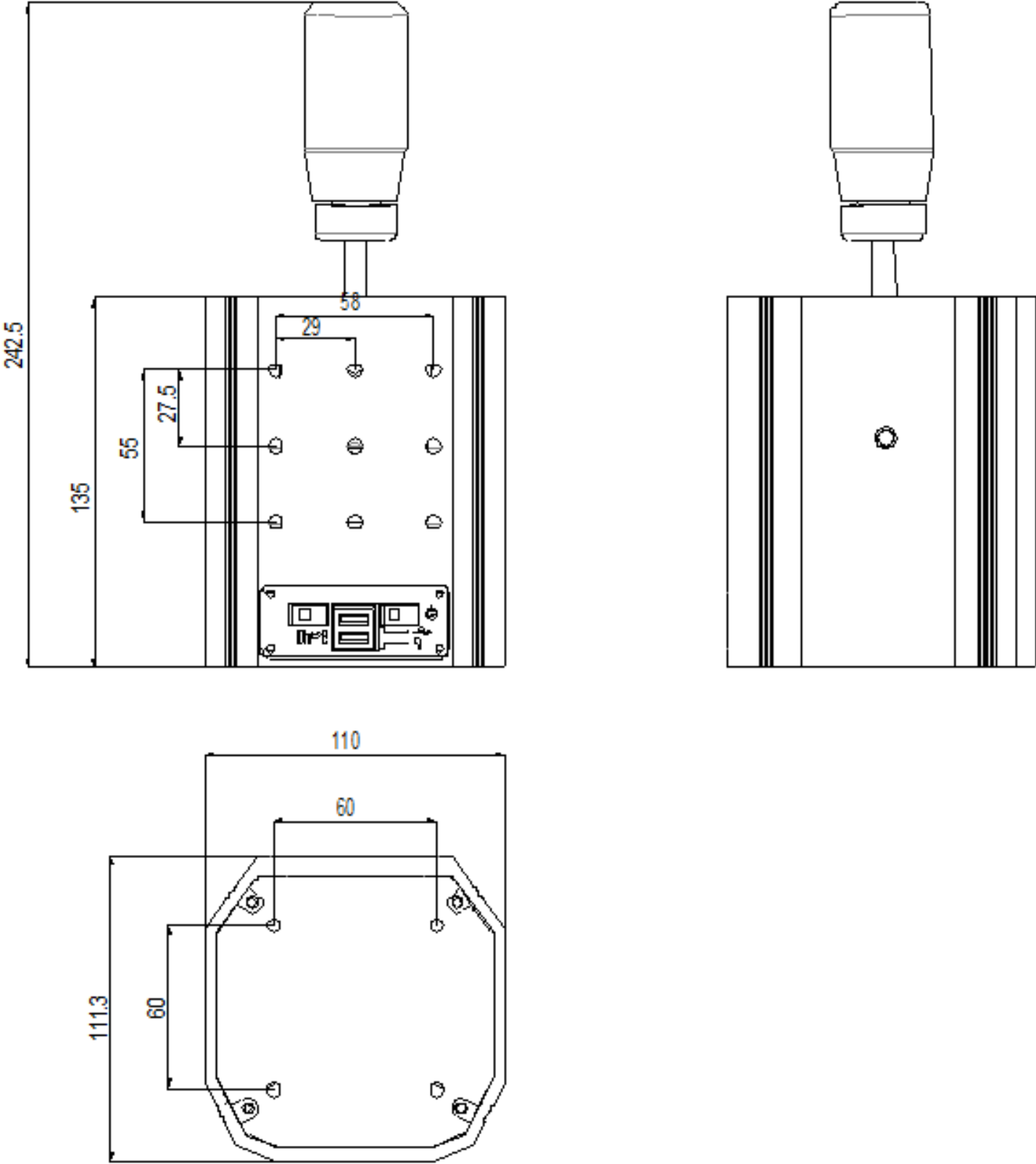


Table Clamp

