



WRFDA Practice Sessions



You are here



Michael Kavulich

WRFDA Tutorial, August 2016, NCAR



Computers

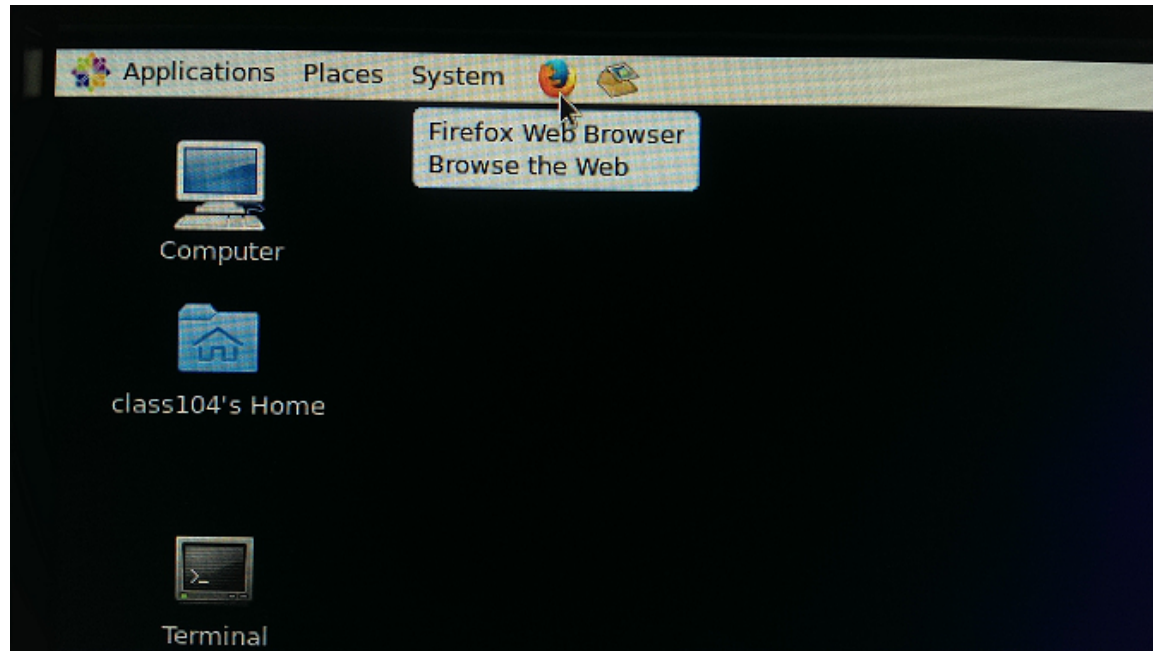
- Look for your name on the list next to the lecture hall door, classroom door, or classroom back wall
- There you will find your computer assignment and your login ID
- If you were here last week, all your WRF data should still be there
- 50 Available computers
 - CentOS Linux Operating System, 64-bit
 - GNU (gfortran) compilers
 - 8-12 Cores

Practice website

- Website:

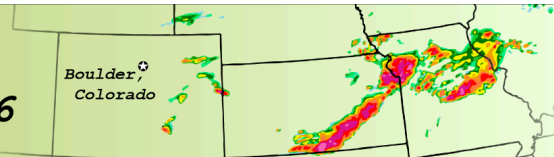
http://www2.mmm.ucar.edu/wrf/users/wrfda/Tutorials/2016_Aug/

- This should be your home page when you open up your internet browser (Firefox is recommended)
- To open Firefox, click the icon at the top left:



Practice website

WRFDA Practice Sessions Summer Tutorial, August 2016



Helpful links

Exercises

Data&Code

Feedback

WRF Basic

WRFDA PRACTICE SESSIONS

Welcome to the WRFDA Tutorial Practice Sessions. If this is your first time in the classroom, please read the following introductory information. If not, you can continue to [the list of practice sessions](#).

These practice pages are designed for the Summer 2016 WRFDA tutorial at NCAR Foothills lab. The path names on this web site are tailored for the NCAR classroom environment. The path names that start with / are absolute paths and they are specific to the classroom computers. The paths that do not start with / are relative paths. Users need to fill in or change the full path names when necessary.

The exercises are organized in the order each topic is introduced. For each exercise, you will have a basic practice with preset namelists and step-by-step commands to guide the first-time users through the procedures. Most exercises also contain additional practice listed in the end of each page; for these additional exercises, users will need to refer to documentation and previous lessons to figure out how to accomplish the tasks.

On NCAR classroom computers:

`/kumquat/users/$USER/DA` is the main working directory for WRFDA practice. If you are just starting the practice sessions, you will need to create this directory.

WRFDA is controlled and executed completely using commands from a terminal. To open a terminal window for working from the command line, click on the **Applications Menu** (located at the top-left corner of the screen). Then go to **System Tools -> Terminal** (at the end of the list).

For all exercises you will need to use a text editor from the command line. The following text editors are available:

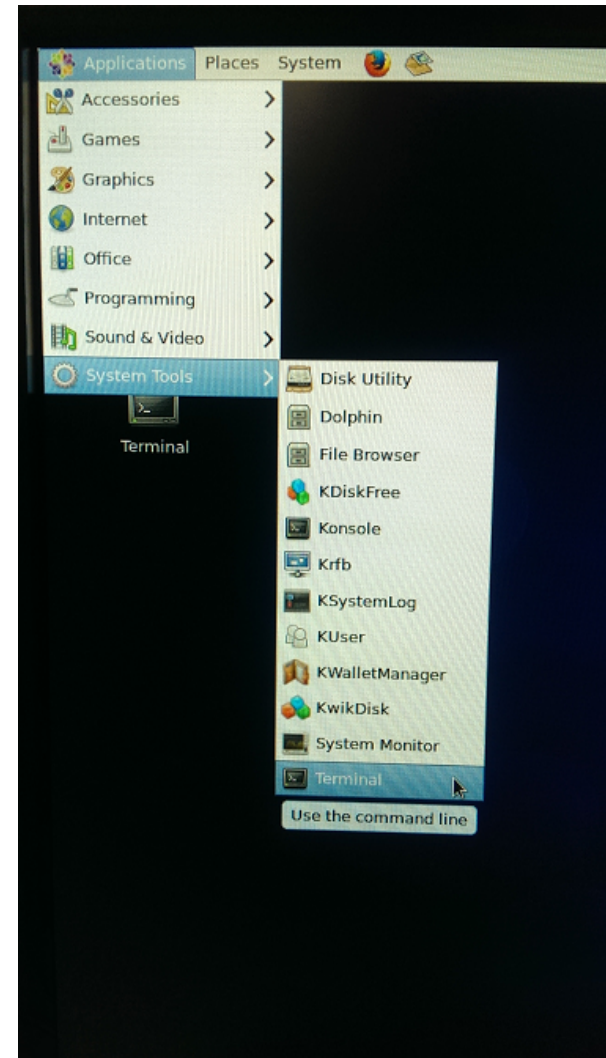
- emacs (probably the easiest for a beginner)
- vi
- nano

Visualization

- `display` (for PDF files)

Opening a terminal

- To open a terminal window, go to the **Applications** menu at top right
- Click **System Tools**
- Click **Terminal**
- These instructions will also be on the practice website



Code access

- All code has been pre-compiled for you
 - Can compile yourself later as a practice
- Code location: /kumquat/wrfhelp/PRE_COMPILED/
WRFDA
 - WRFDA: WRFDA_compiled.tar.gz
 - WRFPLUS: WRFPLUS_compiled.tar.gz
 - Will be necessary for some later exercises



Other notes

- The schedule is on the back of your nametags, and also on the WRFDA Practical Session webpage
- We tried to keep everyone who was here last week at the same computer
- If you have any questions, instructors will be available in the classroom to help